



**Cape Elizabeth School Department
Cape Elizabeth, ME**

**School Year 2023-24 Enrollment Projection Report
Revised 11/6/23**

Copyright, New England School Development Council, 2023

Table of Contents

Section	Page
Enrollment Summary.....	1
Historical Enrollment Table.....	2
Historical Enrollment Graph.....	3
Projected Enrollment Table.....	4
Projected Enrollment Graph.....	5
Historical & Projected Enrollment Graph.....	6
Historical & Projected Enrollment in Grade Combinations Line Graph.....	7
Historical & Projected Enrollment in Grade Combinations Stacked Column Graph.....	8
Birth to Kindergarten Relationship Graph.....	9
Additional Information	10
New England's PK-12 Enrollment Trends.....	11
Methodology, Reliability and Use of this Document.....	12

Enrollment Summary

NESDEC is pleased to send you this report displaying the past, present, and projected enrollments for your District. It is important to update enrollment projections every year to identify changes in enrollment patterns. Ten-year projections are designed to provide your District with yearly, up-to-date enrollment information that can be used by boards and administrators for effective planning and allocation of resources.

Included in this report are graphs representing historical and projected grade-by-grade enrollments, as well as historical and projected enrollments in grade combinations. We received the enrollment data from the District, and we assume that the method of collecting this data has been consistent from year to year.

Enrollment projections are more reliable in Years #1-4 in the future and less reliable in the “out-years.” Projections six to ten years out may serve as a guide to future enrollments and are useful for planning purposes. In light of this, NESDEC has added a “Spring Update Refresher” enrollment projection at no cost to affiliates. For more information, please refer to the Methodology, Reliability and Use of this Document section.

The NESDEC enrollment projection fell within 10 students of the K-12 total, 1,507 students projected vs. 1,497 enrolled.

Births remain stable going forward. In most districts, Grades 1-8 are very stable in enrollments. However, there have been increases in 6 of the 8 most recent years, leading to a net increase averaging 14 students per year.

Over the next three years, Grades K-4 enrollments are projected to increase by 28 students, Grades 5-8 enrollments are projected to increase by 20 students and Grades 9-12 enrollments are projected to decrease by 73 students, as students move through the grades.

Historical Enrollment

School District: Cape Elizabeth, ME - Revised 11/6/23

11/6/2023

Historical Enrollment By Grade																			
Birth Year	Births*	School Year	PK	K	1	2	3	4	5	6	7	8	9	10	11	12	UNGR	K-12	PK-12
2008	73	2013-14	0	96	99	127	113	135	138	131	150	124	129	161	137	128	0	1668	1668
2009	74	2014-15	0	101	104	100	131	112	137	137	128	150	116	133	152	139	0	1640	1640
2010	70	2015-16	0	96	106	114	115	142	117	141	132	128	149	111	129	152	0	1632	1632
2011	56	2016-17	0	101	102	113	113	117	149	121	143	128	127	142	114	132	0	1602	1602
2012	47	2017-18	0	80	108	101	125	124	122	153	127	149	133	125	146	112	0	1605	1605
2013	54	2018-19	0	109	82	108	100	126	126	119	151	124	139	135	117	142	0	1578	1578
2014	65	2019-20	0	97	111	92	113	104	129	125	120	155	123	151	133	123	0	1576	1576
2015	60	2020-21	0	96	90	111	86	106	103	127	119	122	140	124	143	133	0	1500	1500
2016	65	2021-22	0	94	103	93	115	88	104	106	122	121	121	149	123	146	0	1485	1485
2017	63	2022-23	0	124	99	105	105	124	98	107	109	120	129	124	144	121	0	1509	1509
2018	58	2023-24	30	105	122	99	109	105	124	98	115	107	114	124	126	149	0	1497	1527

*Birth data provided by Public Health Vital Records Departments in each state.

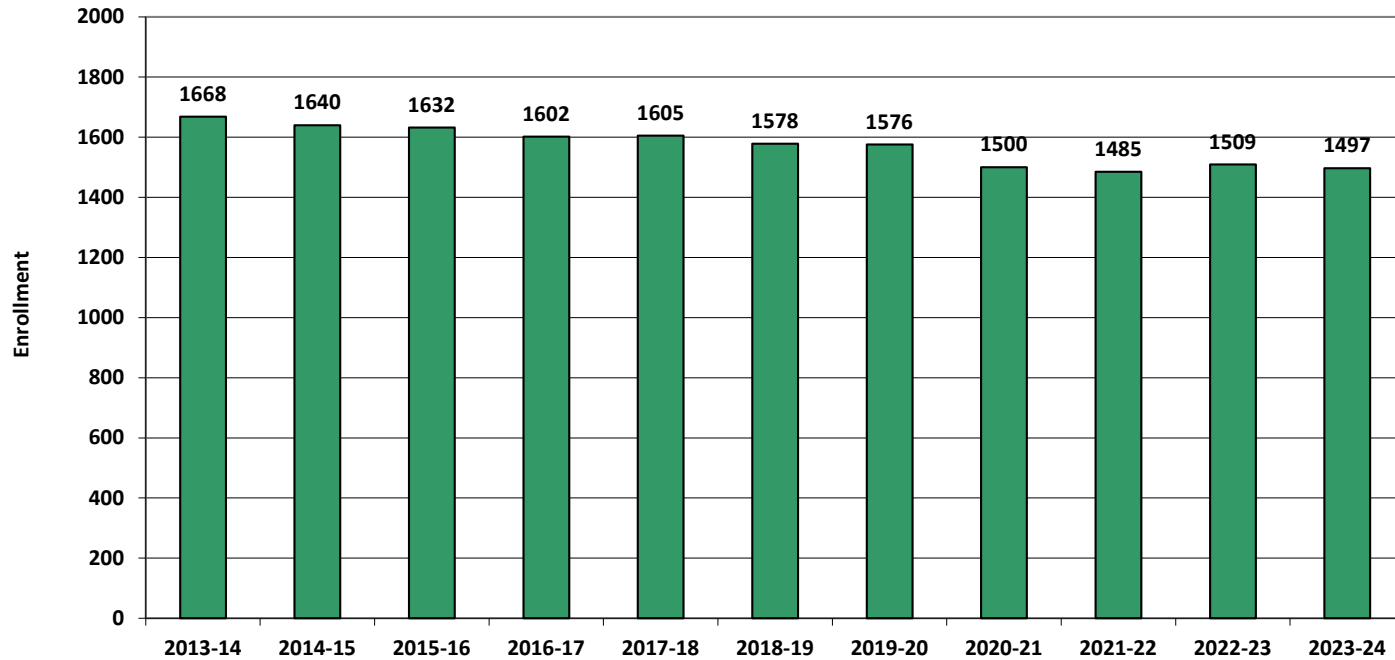
** < 10 Not reported, to protect subgroups with fewer than 10 students.

Historical Enrollment in Grade Combinations									
School Year	PK-4	K-4	K-6	K-8	5-8	6-8	7-8	5-12	9-12
2013-14	570	570	839	1113	543	405	274	1098	555
2014-15	548	548	822	1100	552	415	278	1092	540
2015-16	573	573	831	1091	518	401	260	1059	541
2016-17	546	546	816	1087	541	392	271	1056	515
2017-18	538	538	813	1089	551	429	276	1067	516
2018-19	525	525	770	1045	520	394	275	1053	533
2019-20	517	517	771	1046	529	400	275	1059	530
2020-21	489	489	719	960	471	368	241	1011	540
2021-22	493	493	703	946	453	349	243	992	539
2022-23	557	557	762	991	434	336	229	952	518
2023-24	570	540	762	984	444	320	222	957	513

Historical Percentage Changes			
School Year	K-12	Diff.	%
2013-14	1668		
2014-15	1640	-28	-1.7%
2015-16	1632	-8	-0.5%
2016-17	1602	-30	-1.8%
2017-18	1605	3	0.2%
2018-19	1578	-27	-1.7%
2019-20	1576	-2	-0.1%
2020-21	1500	-76	-4.8%
2021-22	1485	-15	-1.0%
2022-23	1509	24	1.6%
2023-24	1497	-12	-0.8%
Change		-171	-10.3%

Historical Enrollment

Grades K-12, School Years 2013-14 to 2023-24



Projected Enrollment

School District: Cape Elizabeth, ME - Revised 11/6/23

11/6/2023

Enrollment Projections By Grade*																				
Birth Year	Births*		School Year	PK	K	1	2	3	4	5	6	7	8	9	10	11	12	UNGR	K-12	PK-12
2018	58		2023-24	30	105	122	99	109	105	124	98	115	107	114	124	126	149	0	1497	1527
2019	63		2024-25	30	111	109	124	103	113	107	126	100	114	107	116	123	128	0	1481	1511
2020	59		2025-26	30	104	115	111	129	106	115	109	129	99	114	109	115	125	0	1480	1510
2021	54		2026-27	30	95	108	117	115	133	108	117	111	128	99	116	108	117	0	1472	1502
2022	74		2027-28	32	130	98	110	122	119	136	110	119	110	128	101	115	109	0	1507	1539
2023	62	(est.)	2028-29	32	108	135	100	114	126	122	139	112	118	110	130	100	117	0	1531	1563
2024	62	(est.)	2029-30	32	110	112	138	104	118	129	124	142	111	118	112	129	101	0	1548	1580
2025	62	(est.)	2030-31	32	109	114	114	144	108	121	131	127	141	111	120	111	131	0	1582	1614
2026	63	(est.)	2031-32	34	111	113	116	119	149	110	123	134	126	141	113	119	112	0	1586	1620
2027	65	(est.)	2032-33	34	114	115	115	121	123	152	112	126	133	126	143	112	121	0	1613	1647
2028	63	(est.)	2033-34	34	110	118	117	120	125	126	155	114	125	133	128	142	113	0	1626	1660

Note: Ungraded students (UNGR) often are high school students whose anticipated years of graduation are unknown, or students with special needs - UNGR not included in Grade Combinations for 7-12, 9-12, etc.

 Based on an estimate of births

 Based on children already born

 Based on students already enrolled

*Birth data provided by Public Health Vital Records Departments in each state.

** < 10 Not reported, to protect subgroups with fewer than 10 students.

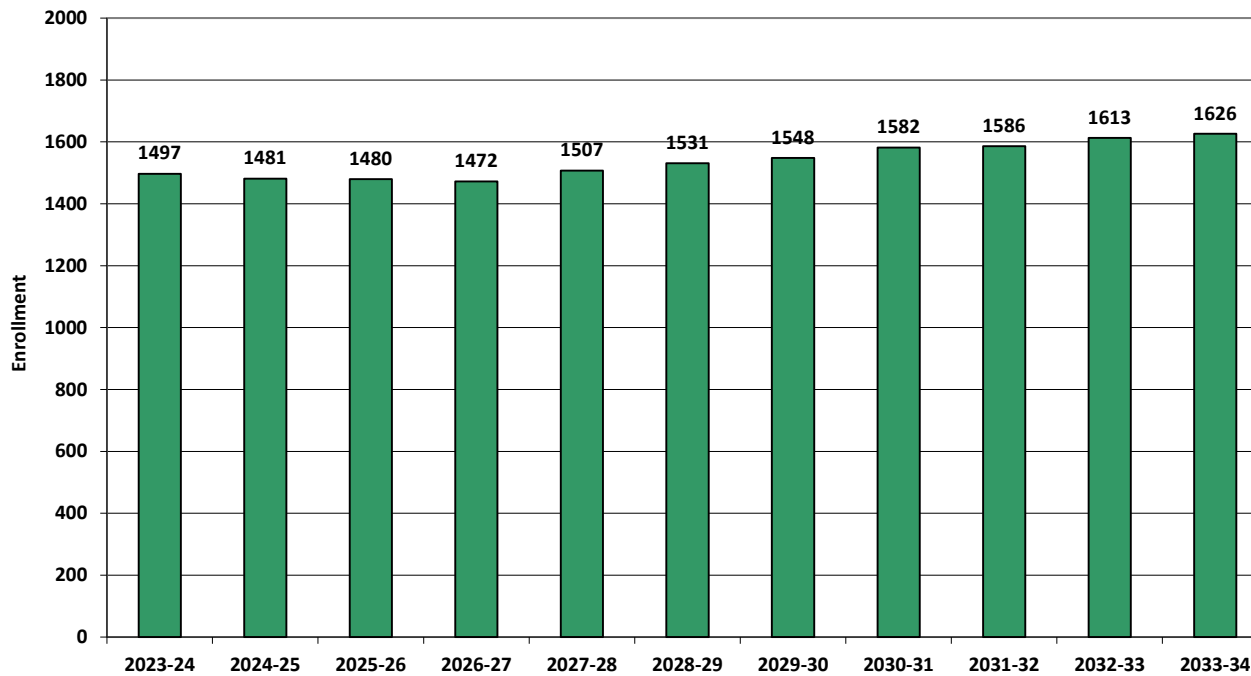
Projected Enrollment in Grade Combinations*									
School Year	PK-4	K-4	K-6	K-8	5-8	6-8	7-8	5-12	9-12
2023-24	570	540	762	984	444	320	222	957	513
2024-25	590	560	793	1007	447	340	214	921	474
2025-26	595	565	789	1017	452	337	228	915	463
2026-27	598	568	793	1032	464	356	239	904	440
2027-28	611	579	825	1054	475	339	229	928	453
2028-29	615	583	844	1074	491	369	230	948	457
2029-30	614	582	835	1088	506	377	253	966	460
2030-31	621	589	841	1109	520	399	268	993	473
2031-32	642	608	841	1101	493	383	260	978	485
2032-33	622	588	852	1111	523	371	259	1025	502
2033-34	624	590	871	1110	520	394	239	1036	516

Projected Percentage Changes			
School Year	K-12	Diff.	%
2023-24	1497	0	0.0%
2024-25	1481	-16	-1.1%
2025-26	1480	-1	-0.1%
2026-27	1472	-8	-0.5%
2027-28	1507	35	2.4%
2028-29	1531	24	1.6%
2029-30	1548	17	1.1%
2030-31	1582	34	2.2%
2031-32	1586	4	0.3%
2032-33	1613	27	1.7%
2033-34	1626	13	0.8%
Change		129	8.6%

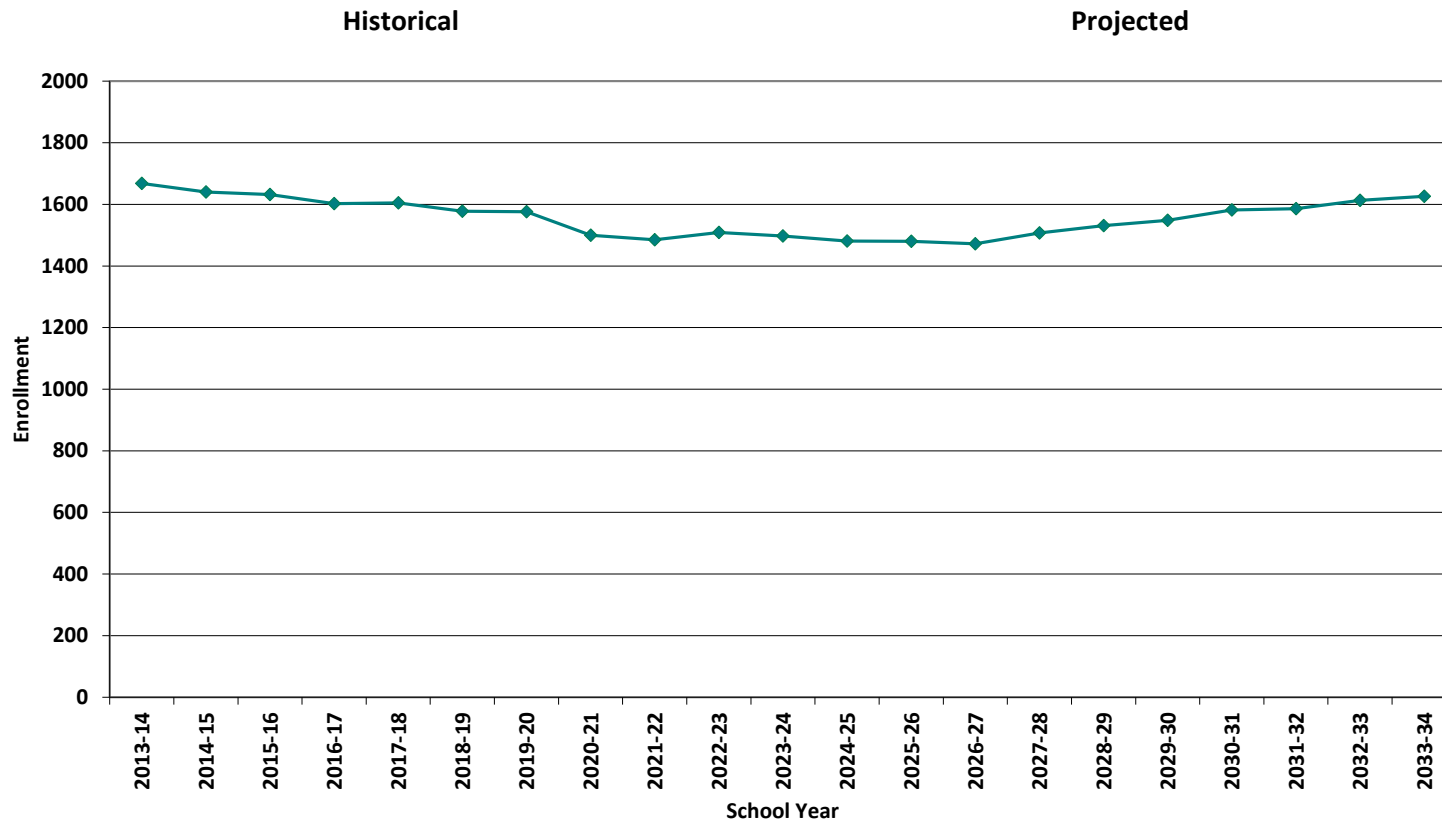
*Projections should be updated annually to reflect changes in in/out-migration of families, real estate sales, residential construction, births, and similar factors.

Projected Enrollment

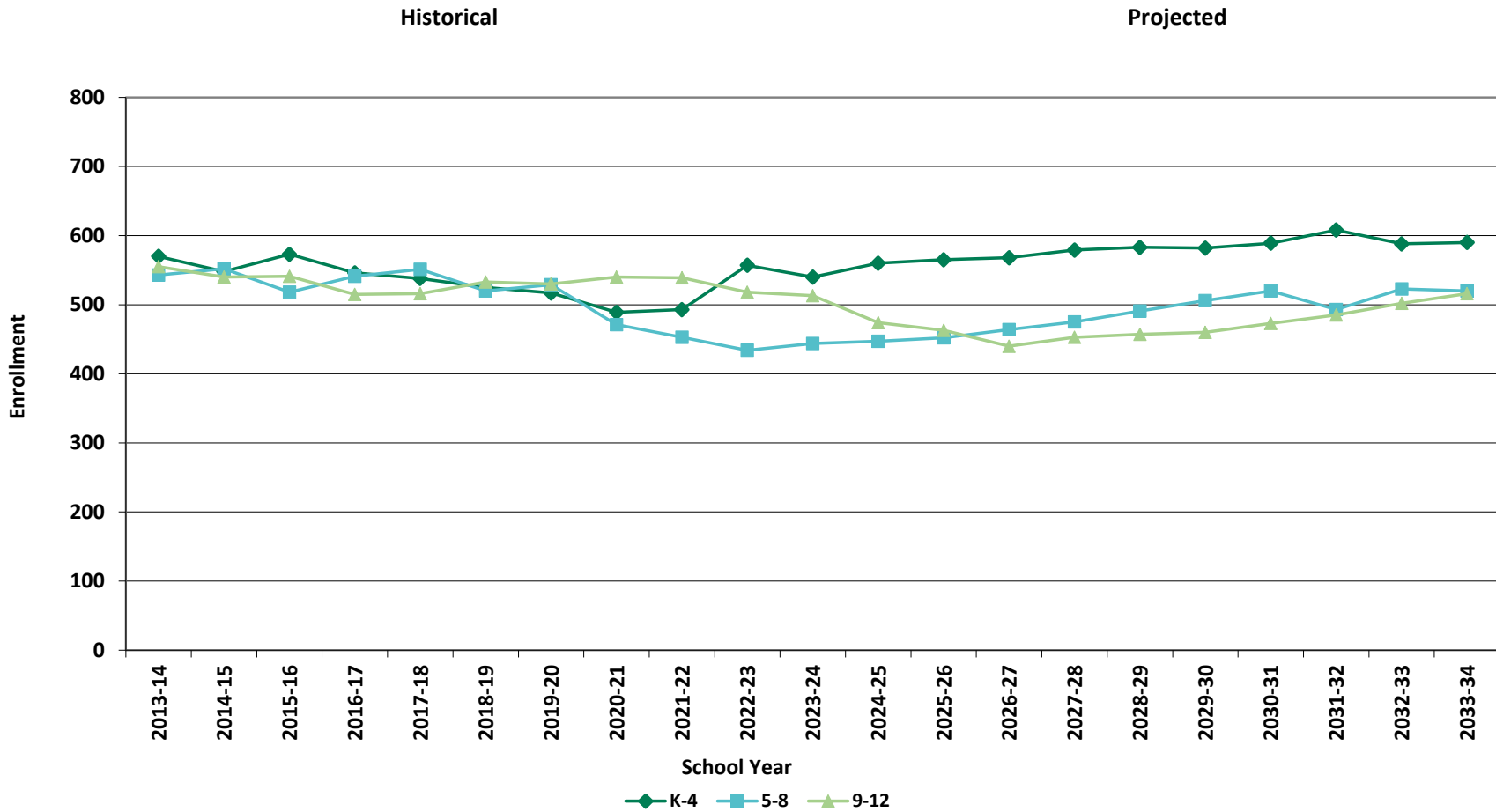
Grades K-12, School Years 2023-24 to 2033-34



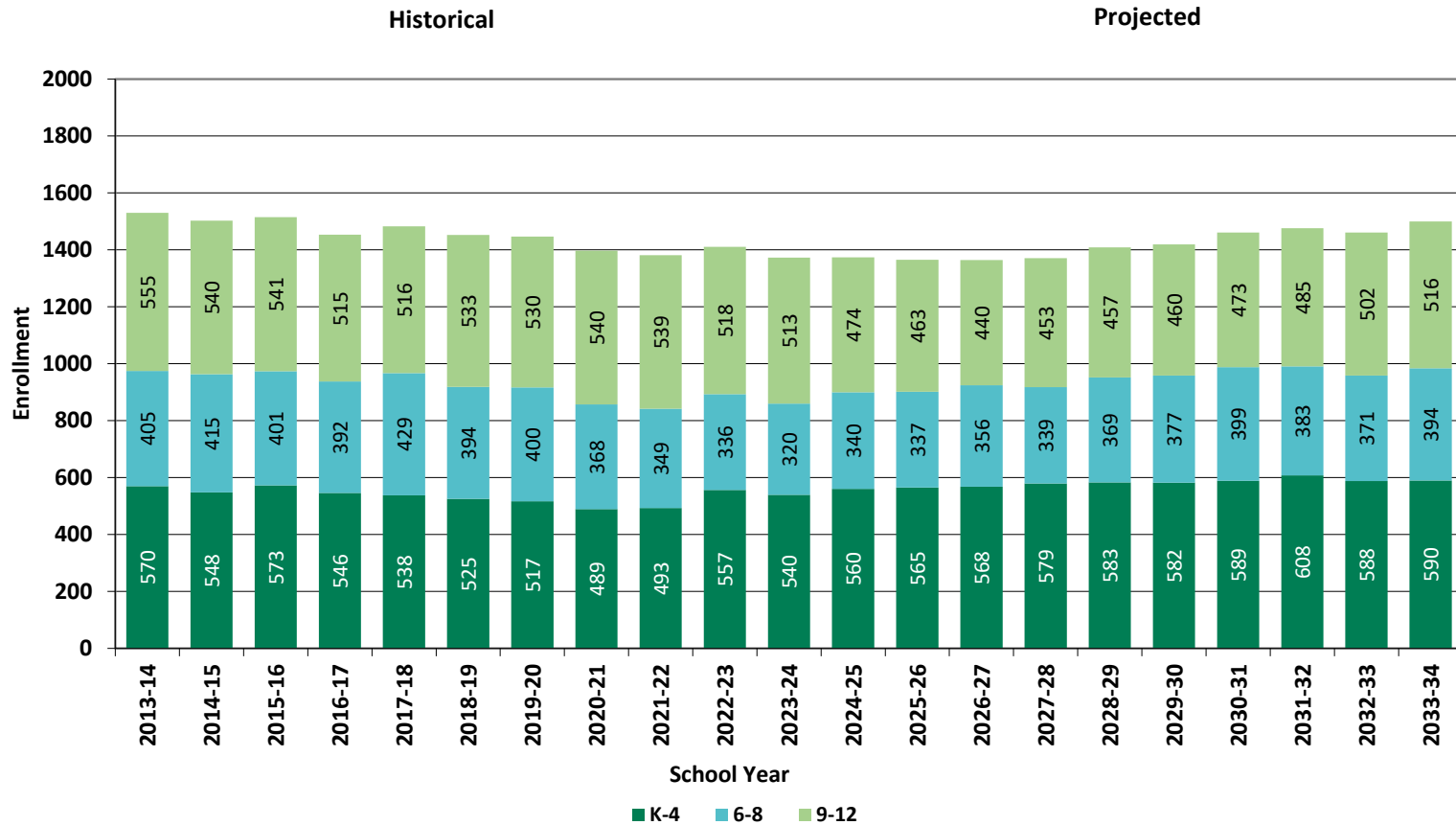
Historical & Projected Enrollment



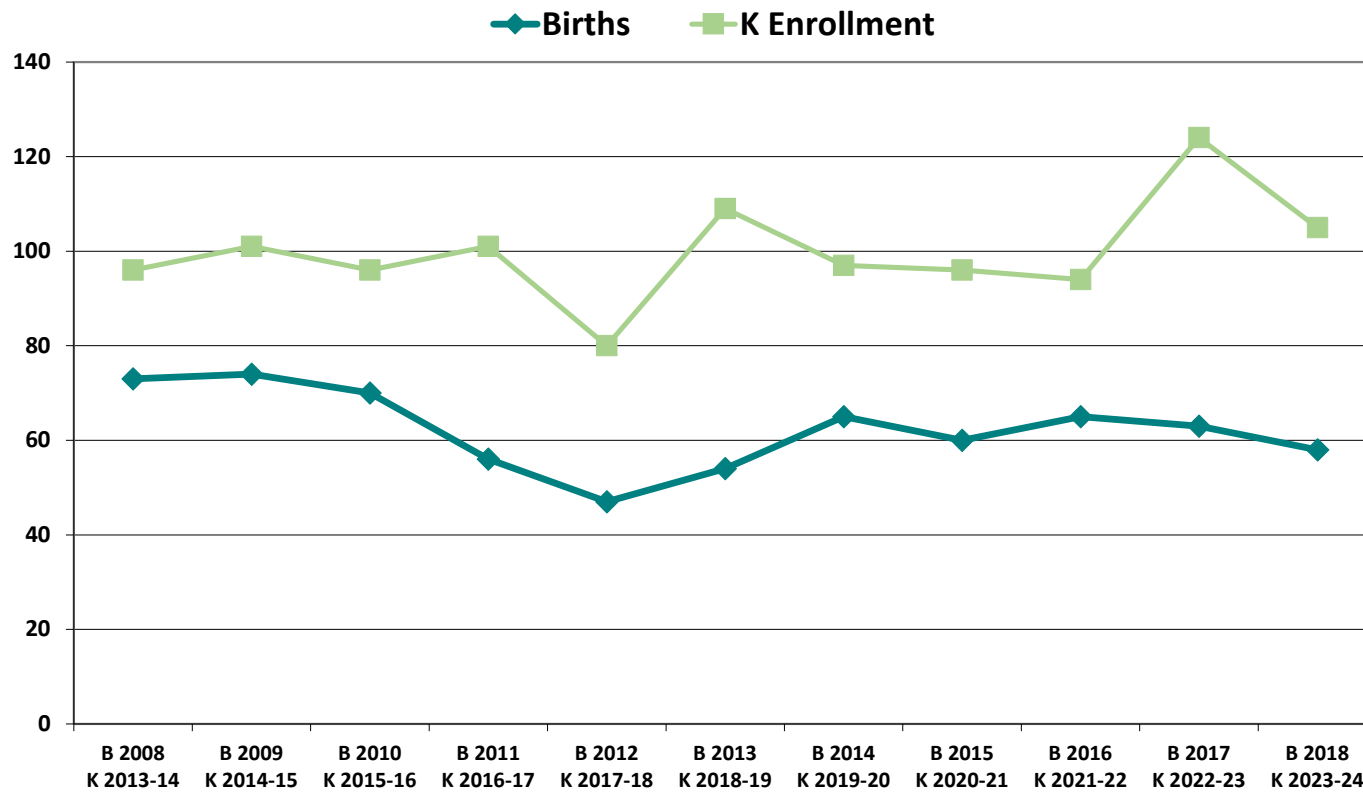
Historical & Projected Enrollments in Grade Combinations



Historical & Projected Enrollments in Grade Combinations



Birth-to-Kindergarten Relationship



Additional Information

Building Permits Issued (Source: HUD)		
Year	Single-Family	Multi-Units
2019	21	0
2020	22	0
2021	18	20
2022	34	8
2023	18 to date	3 to date

School Year	9 - 12 CTE	K - 12 Non-Public	K - 12 Choice-In	K - 12 Choice-Out	K - 12 Out-of-District SPED	K - 12 Homeschool
2019-20	n/a	n/a	n/a	n/a	n/a	n/a
2020-21	n/a	n/a	16	0	< 10 **	33
2021-22	n/a	n/a	23	< 10 **	< 10 **	11
2022-23	n/a	n/a	23	19	< 10 **	< 10 **
2023-24	n/a	n/a	n/a	n/a	1	9

*The above data was provided by the District, with the exception of building permit data (provided by HUD).

"n/a" signifies that information was not provided by District.

** < 10 Not reported, to protect subgroups with fewer than 10 students.

New England's PK-12 Enrollments Trends

From 2021 to 2030, the US Department of Education anticipates changes in PK-12 enrollment of -3.2% in the South, -6.0% in the West, -3.9% in the Midwest, -6.0% in the Northeast, and a total of -4.4% nationwide.

State	Fall 2021 PK - 12	Fall 2030 Projected	PK-12 Decline	% Change 2021-2030
USA	49,452,864	47,252,500	-2,200,364	-4.4%
CT	508,686	475,600	-33,086	-6.5%
ME	173,215	161,800	-11,415	-6.6%
MA	921,180	879,900	-41,280	-4.5%
NH	170,005	144,600	-25,405	-14.9%
RI	138,566	130,200	-8,366	-6.0%
VT	83,975	74,600	-9,375	-11.2%

Source: U.S. Department of Education, National Center for Education Statistics, Enrollment in public elementary and secondary schools, by region, state, and jurisdiction: Selected years, fall 1990 through fall 2030, Table 203.20, March 2023.

Although most New England Districts are seeing a decline in the number of births, NESDEC's experience indicates that the impact on enrollment varies from District to District. Almost half of New England Districts have been growing in PK-12 enrollment, and a similar number are declining (often in rural areas), with the other Districts remaining stable.

PROJECTION METHODOLOGY

Cohort component (survival) technique is a frequently used method of preparing enrollment forecasts. NESDEC uses this method, but modifies it in order to move away from forecasts that are wholly computer- or formula-driven. Such modification permits the incorporation of important, current district-specific demographic information into the generation of enrollment forecasts (such as in/out-migration of students, resident births, HUD-reported building permits, etc.). Percentages are calculated from the historical enrollment data to determine a reliable percentage of increase or decrease in enrollment between any two grades. For example, if 100 students enrolled in Grade 1 in 2022-23 increased to 104 students in Grade 2 in 2023-24, the percentage of survival would be 104%, or a ratio of 1.04. Ratios are calculated between each pair of grades or years in school over several recent years.

After study and analysis of the historical ratios, and based upon a reasonable set of assumptions regarding births, migration rates, retention rates, etc., ratios most indicative of future growth patterns are determined for each pair of grades. The ratios thus selected are applied to the present enrollment statistics to project into future years. The ratios are the key factors in the reliability of the projections, assuming validity of the data at the starting point.

RELIABILITY OF ENROLLMENT PROJECTIONS

Projections can serve as useful guides to school administrators for educational planning. Enrollment projections are more reliable in Years #1-4 in the future and less reliable in the "out-years." Projections six to ten years out may serve as a guide to future enrollments and are useful for planning purposes, but they should be viewed as subject to change given the likelihood of potential shifts in underlying assumptions/trends, such as student migration, births as they relate to Kindergarten enrollment, and other factors.

Projections that are based upon **the children who already are in the district** (the current K-12 population only) will be the most reliable. The second level of reliability will be for those children already **born into the community but not yet old enough to be in school**. The least reliable category is the group for which an estimate must be made **to predict the number of births**, thereby adding additional uncertainty. See these three multi-colored groupings on the "Projected Enrollment" tab.

Annual updates allow for early identification of recent changes in historical trends. When the actual enrollment in a grade is significantly different (higher or lower) from the projected number, it is important (yet difficult) to determine whether this is a one-year aberration or whether a new trend may have begun. **In light of this possibility, NESDEC urges all school districts to have updated enrollment forecasts developed by NESDEC each October.** This service is available at no cost to affiliated school districts.

USING THIS INFORMATION ELECTRONICALLY

If you would like to extract the information contained in this report for your own documents or presentations, you can use screenshots, which can be inserted into PowerPoint slides, Word documents, etc. Because screenshots create graphics, the image is not editable. Please feel free to contact us if you need assistance in this matter, by phone (508-481-9444) or by email (ep@nesdec.org).